

SCHEDULE D – Building Elevations



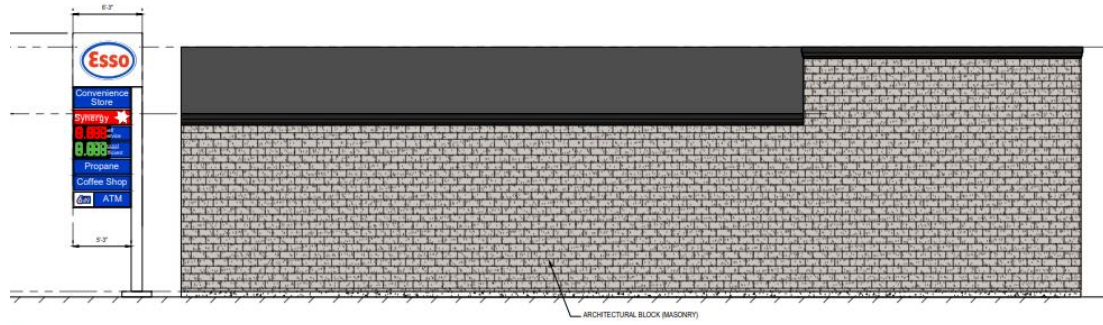
SOUTH ELEVATION

Scale: 3/16" = 1'-0"



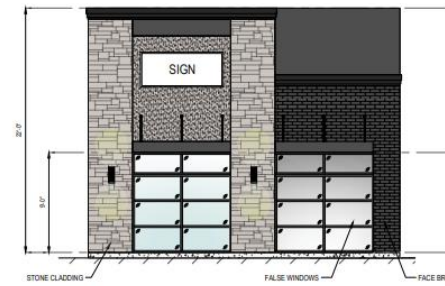
WEST ELEVATION

Scale: 3/16" = 1'-0"



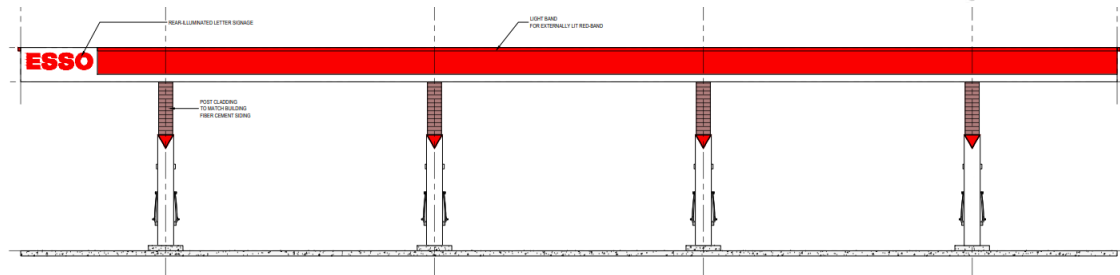
NORTH ELEVATION

Scale: 3/16" = 1'-0"



EAST ELEVATION

Scale: 3/16" = 1'-0"



CANOPY ELEVATION

Scale: 1/4" = 1'-0"

