

GENERAL NOTES

- Any discrepancies in dimensions or locations of existing elements noted during lay-out of landscape architectural elements shall be reported to landscape architect before installation of new work. Final lay-out of plant material to be approved by Landscape Architect prior to installation.
- All plant material shall be nursery stock conforming to the latest edition of the Canadian Standards for Nursery Stock as published by the Canadian Nursery Landscape Association.
- All plants shall be healthy, vigorous plants, free from defects, decay, disfiguring roots, sun-scald injuries, bark abrasions, plant diseases and pests and all forms of infestations or objectionable disfigurements.
- All plants shall be true to name, size, condition and quantity as per plan and plant list specifications.
- All plant material shall be unwrapped prior to inspection. Plant material that does not meet the standards listed herein shall be rejected.
- Substitutions will not be accepted without prior written request to the client and the consulting Landscape Architect. Additional plant quantities will be required to compensate for approved reduction in size due to unavailability of materials, to the satisfaction of the consulting Landscape Architect.
- Underground utilities to be located prior to digging of tree pits or shrub beds.

TREES:

- All trees shall be open-grown for wind-firmness. Trees shall not be leaning or have significant sweep, crook or bend. Deciduous trees shall have approximately two-thirds of their total height in living branches. All trees shall have good crown shape and colour (evergreens) characteristic of their species. Trees shall have a single dominant leader with no side branches taller/ longer than the main leader.
- All trees shall have root ball sizes that meet or exceed nursery standards. Root balls shall be firm and structurally integral with the trunk.
- Trees to be warranted for 2 year period.

SHRUBS/ORNAMENTAL GRASSES:

- Shrubs shall have full, well branched crowns typical of species or variety.
- Root systems shall be ample, well-balanced and fibrous, capable of sustaining vigorous growth. Plants that are weak or thin, undersized, or have been cut back from larger grades to meet specifications shall be rejected.
- Shrubs to be planted individually as per instructions below.
- Ornamental grasses to be planted in continuous bed as per instructions below.

MYCORRHIZAL FUNGI:

- Apply mycorrhizal fungi growth supplement to the rootballs of all trees and shrubs following package recommendations. Spread over the entire rootball to ensure contact with new roots.

MULCH/COCO DISCS:

- Mulch to be double tub ground (fine) varying in size from 10 to 30mm in diameter, free of debris, and wood from other tree species other than cedar or cedar/pine mix. Provide Landscape Architect with sample prior to installation.
- Ornamental grass planting bed around the transformer as well as all trees to be mulched.
- Coco Discs to be 44cm. diameter- placed around base of shrubs.

PLANTING CONTAINER-GROWN SHRUBS

- Dig individual planting hole just as deep as the shrub's container so that the plant is sitting on undug soil. Slope the sides such that the hole is wider (approx. 3X the size of the container) at the top to encourage the roots to grow laterally outward into the soil. Score the sides of the hole with the edge of the spade.
- Water all shrubs thoroughly before gently removing from pots.
- Slide the root ball out of the container carefully and loosen or untangle any circling or snarled roots. Cut off impenetrable masses of roots.
- Apply mycorrhizal fungi all over root system as per manufacturer's recommendations.
- Set plant in planting hole such that the top of its soil ball is even with, or slightly above the surrounding ground.
- Place the plant in the hole with the roots teased gently outward in all directions and begin to backfill with the soil removed from the hole. When the hole is 1/3 full, check to make sure the plant is straight and at proper depth, then fill remainder of hole with the native soil. Firm the soil to remove air pockets.
- Water new shrubs and then place Coco Discs around the base of each shrub on the surface of the soil.

PLANTING ORNAMENTAL GRASSES

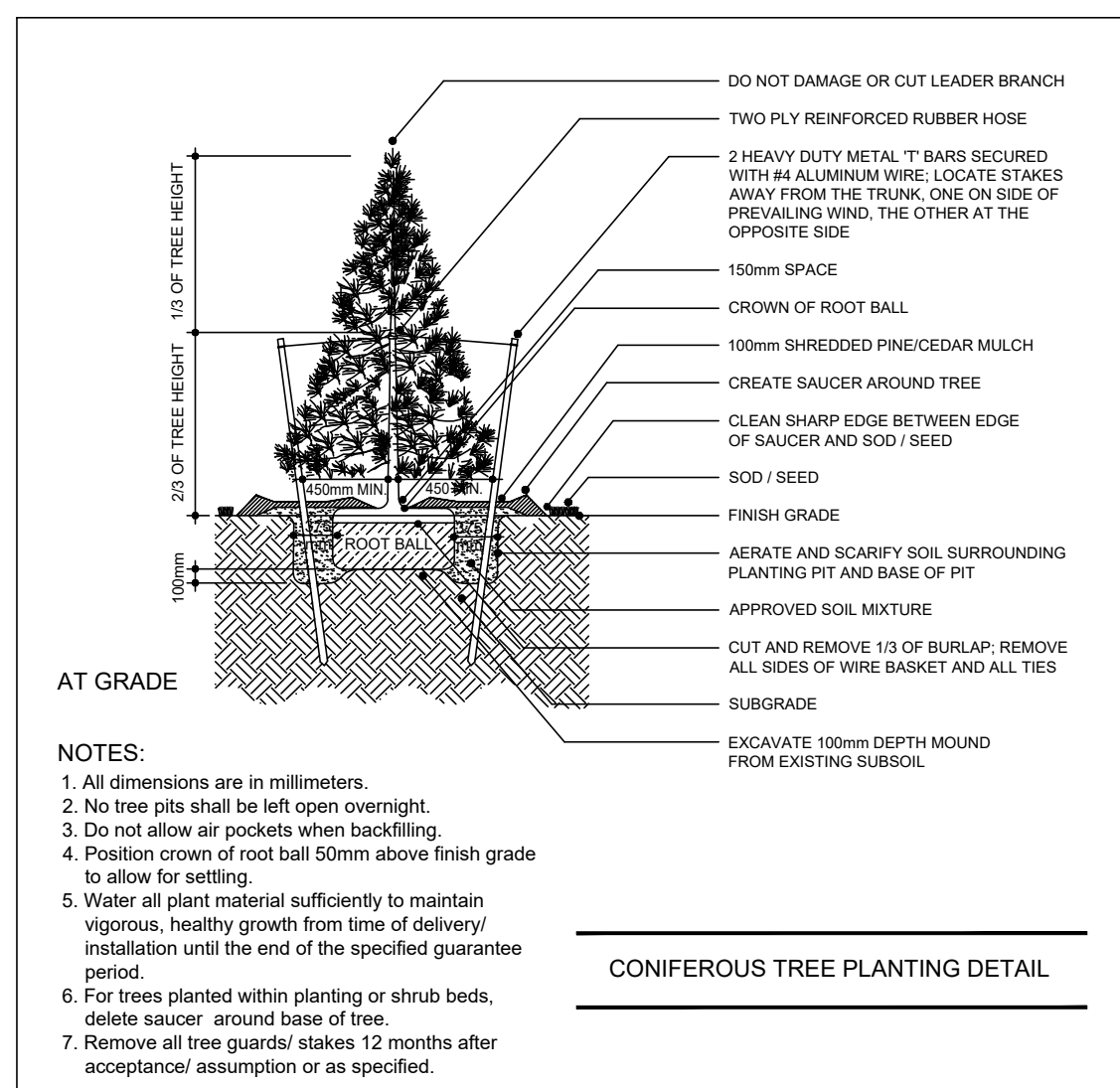
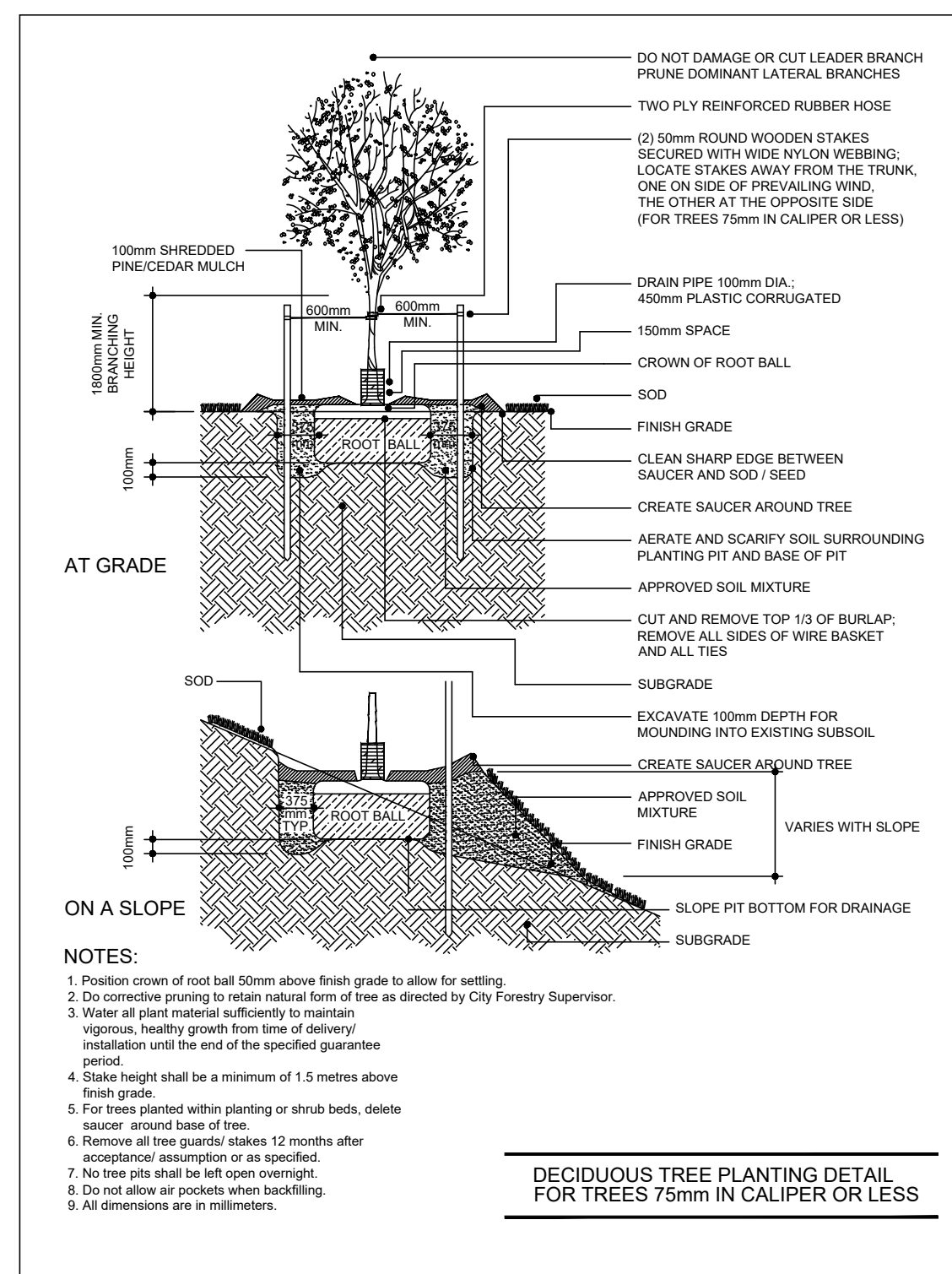
- Ornamental grass to be planted in continuous bed around 3 sides of one transformer.
- Bed to be 500mm depth and filled with approved soil mixture.
- Remove ornamental grass plant from container and scarify edges.
- Position in bed such that crown of material rests slightly above finish grade to allow for settling.
- Filter cloth to be installed beneath shredded mulch.
- Apply 50mm depth of approved shredded mulch over entire planting bed.

GRASSED AREAS:

- Watering of grassed areas required as necessary to ensure grass "takes".

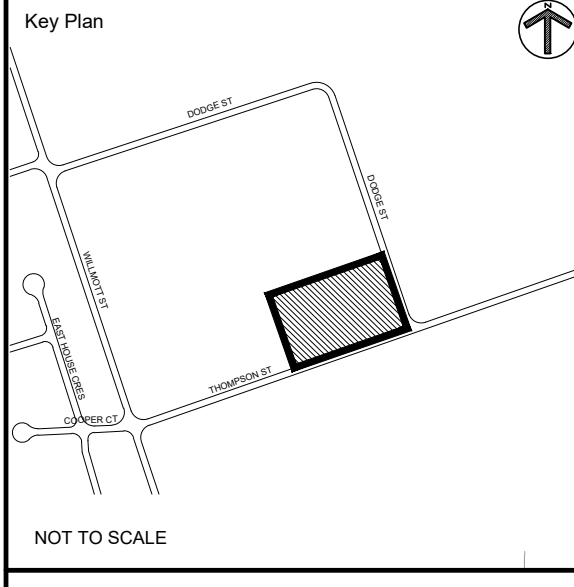
WATERING:

- Water all plant material sufficiently to maintain vigorous, healthy growth from time of delivery/installation until end of specified guarantee period.

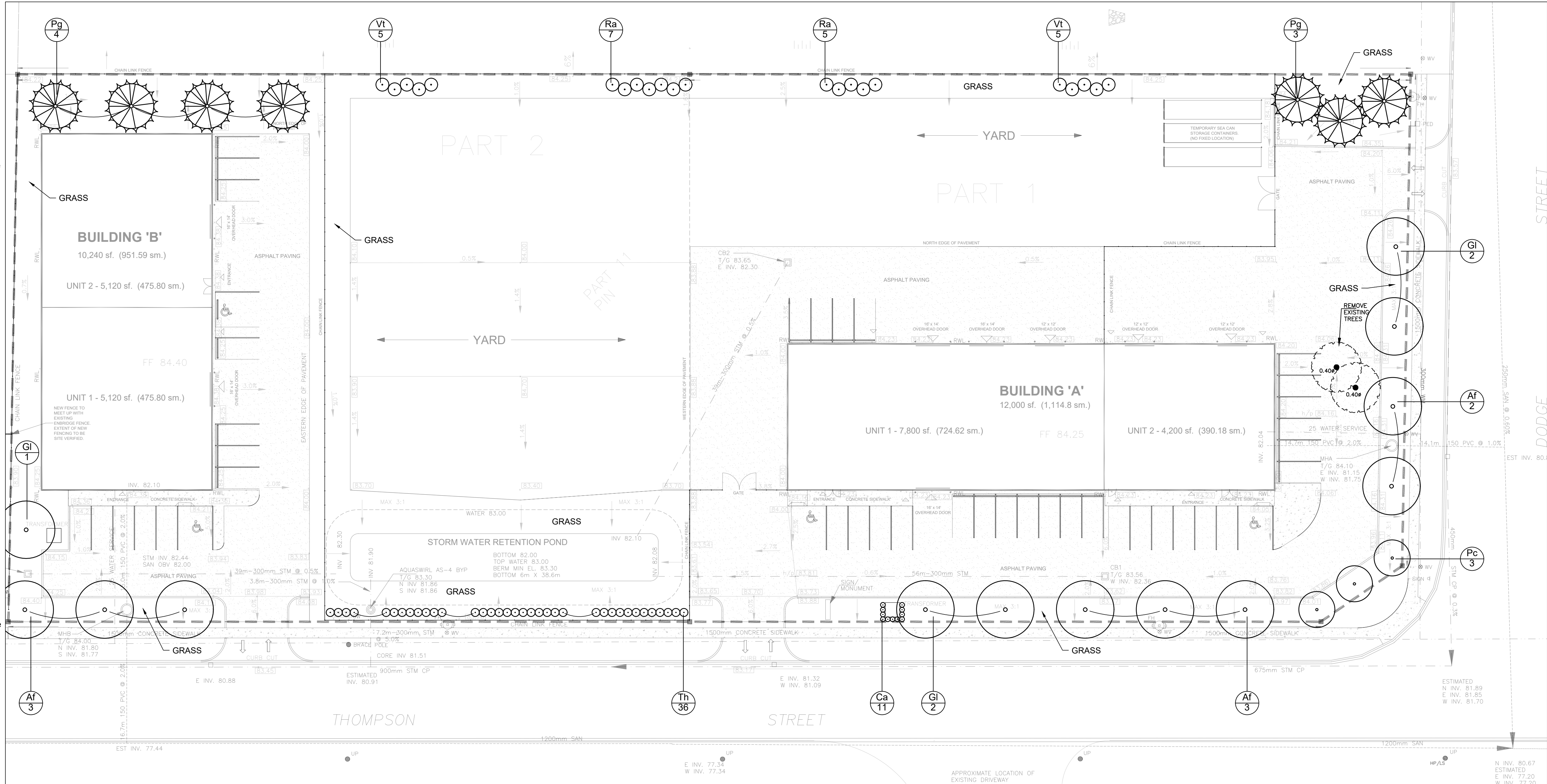


PLANT LIST

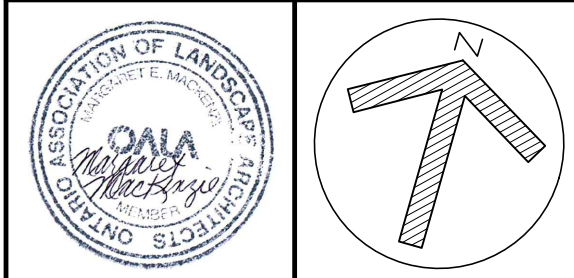
KEY	QUANTITY	BOTANICAL NAME	COMMON NAME	ALL SIZES IN MILLIMETERS						REMARKS
				CALIPER	HEIGHT	SPREAD	BRANCH HEIGHT	CONDITION		
DECIDUOUS TREES										
Af	8	ACER FREEMANII 'AUTUMN BLAZE'	AUTUMN BLAZE MAPLE	60	3800	1800	1750	B&B	UNIFORM SPECIMEN	
Gl	5	GLEDITSIA TRIACANTHOS 'SHADEMASTER'	SHADEMASTER HONEY LOCUST	60	3800	1800	1750	B&B	UNIFORM SPECIMEN	
Pc	3	PYRUS CALLERYANA 'CHANTICLEER'	CHANTICLEER ORNAMENTAL PEAR	60	3500	1600	1750	B&B	UNIFORM SPECIMEN	
EVERGREEN TREES										
Pg	7	PICEA GLAUCA	WHITE SPRUCE		1750	--		BASE	B&B	UNIFORM SPECIMEN
DECIDUOUS SHRUBS										
Ra	12	RHUS AROMATICA	FRAGRANT SUMAC	1500	1000	--		BASE	POTTED	UNIFORM SPECIMEN
Vt	10	VIBURNUM TRILOBUM	AMERICAN Highbush CRANBERRY	1500	1000	--		BASE	POTTED	UNIFORM SPECIMEN
EVERGREEN SHRUBS										
Th	36	THUJA OCCIDENTALIS	WHITE CEDAR	1000	1600	--		BASE	B&B	NATIVE FIELD GROWN
ORNAMENTAL GRASSES										
Ca	11	CALAMAGROSTIS X ACUTIFOLIA 'KARL FOERSTER'	FEATHER REED GRASS	600	--	--		BASE	POTTED	UNIFORM SPECIMEN 1 GAL POT



Legend



2	Re-issued for SPA	03.05.22
1	Issued for SPA	Aug. 2021



9124 Racetrack Road
Cobourg, ON K9A 4J9
905.269.5200
mrmackenzie@mmma.ca

Project
DODGER INVESTMENTS INC.
560 THOMPSON STREET
COBOURG, ONTARIO

Drawing Title
LANDSCAPE PLAN

Drawn	DJ	Project No.	02-21
Checked	MM	Drawing No.	
Date	JULY 2021	L1	
Scale	1:300		