

GENERAL LANDSCAPING NOTES

- VERIFY SERVING AND LOCATE UTILITIES PRIOR TO EDUCATION.
- CONFIRM SITE READINESS AND ADVISE LANDSCAPE ARCHITECTURE CONSULTANT OF INSTALLATION SCHEDULE. VERIFY LISTED QUANTITIES WITH A REPORT GEOGRAPHERS IMMEDIATELY. ENSURE SOIL MIXTURE INCLUDING TOPSOIL IS SUITABLE FOR WORK.
- MARK OUT LOCATIONS OF TREES OR APPROVAL PRIOR TO PLANTING. SET OUT SHRUBS AND GROUND COVERS FOR APPROVAL PRIOR TO PLANTING.
- ALL TREE SAUCERS, PLANTERS AND SHRUB BEDS TO BE MATCHED.
- ANY REJECTED MATERIAL SHALL BE REPLACED IMMEDIATELY.
- ENSURE ADEQUATE WATERING OF PLANTINGS TO FIRST WINTER DORMANCY.
- TEMPORARY STAKING TO BE REMOVED BY LANDSCAPE CONTRACTOR FOLLOWING ACCEPTANCE AT ONE YEAR WARRANTY REVIEW. PROTECT EXISTING TREES AND NATURAL AREAS TO REMAIN.
- WHERE THERE IS A DISCREPANCY BETWEEN DRAWINGS AND MUNICIPAL SPECIFICATIONS, THE MUNICIPAL SPECIFICATIONS SHALL PREVAIL.

TREE PLANTING

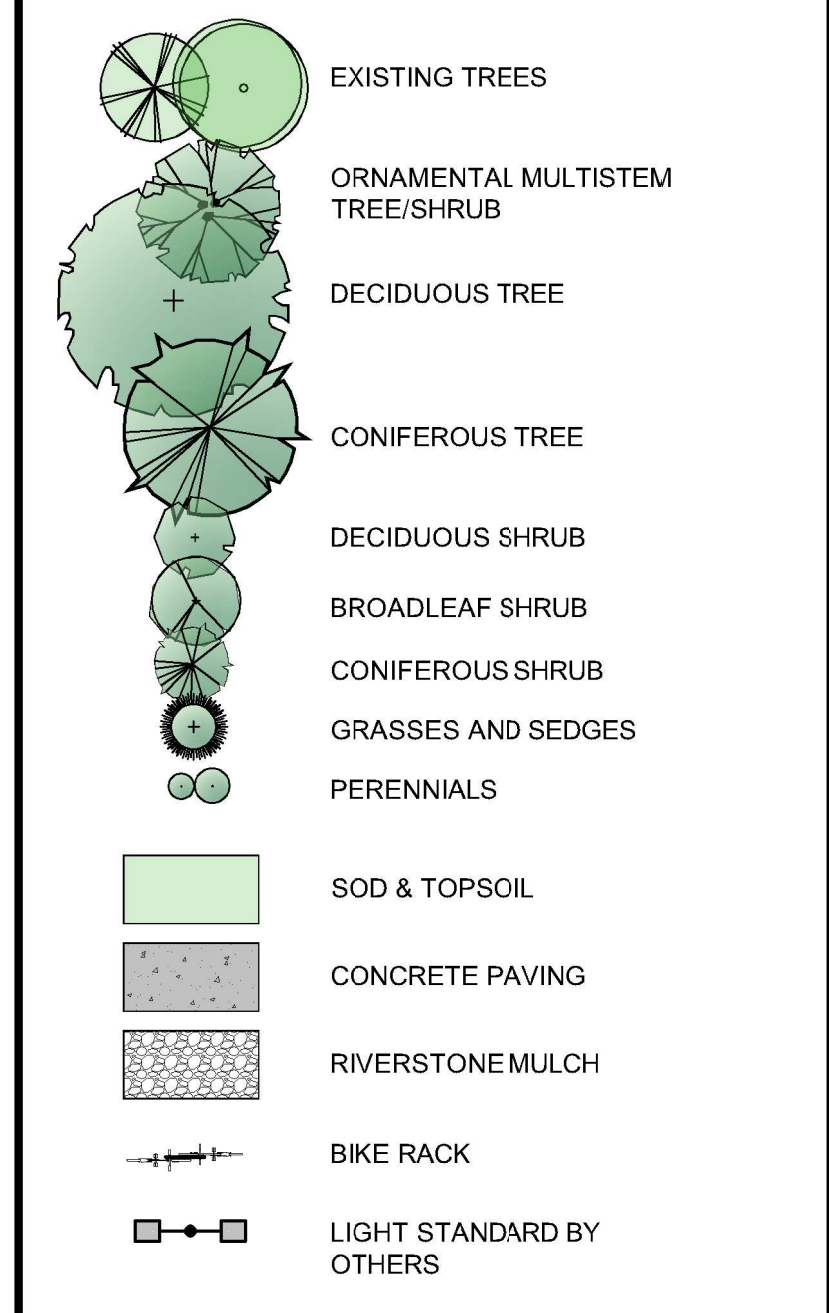
- SELECT SPECIMENS TO SUIT LOCATION, SETTING PLANT IN SAME LEVEL AND ORIENTATION TO TRUNK. NORTH SIDE OF TRUNK FACING NORTH. SET NURSERY GROWN PLANTS IN PLANTING PIT AND MAKE MINOR ADJUSTMENT TO PLACE PLANT FOR BEST APPEARANCE FROM MAIN VIEWS. SET TREE IN PIT AND COORDINATE INSTALLATION TO REMOVE ROPE AND WIRE BODIES AS NOT BE BACKLED. CLIPPING THE BRANCHES AND WIRE BODIES WITHOUT DISTURBING THE TREE. REMOVE AT LEAST HALF BURLAP COVERING AND FOLD DOWN REMAINING BURLAP TO BURY IN PIT. ENSURE SOIL OF ROOTBALL IS MOISTENED TO KEEP ROOTBALL FROM DRYING. AVOID PLANTING STAKE TREES TO HOLD IN PLACE. REFER ABOVE. SCARIFY PIT BOTTOM AND SIDES. BACKFILL PIT WITH NATURAL WATERING MEDIA. FOR INDIVIDUAL PITS, A MIXTURE OF 2 PARTS SOIL WITH 1 PART SOIL SPECIFIC AMENDMENT. TOP IN 100MM LAYER. WATER THOROUGHLY TO SATURATE PIT AND SURROUNDING SOIL. IT IS IMPERATIVE THE WIRE BODIES BE REMOVED AND PLANTING TECHNIQUE ENSURE THE ESTABLISHMENT OF THE TREE.
- STAKE SECURELY WITH 2 T IRON SET PLUMB AND AT EQUAL HEIGHT. THE TREE TO STAKE WITH AN EQUAL DOWEL WIRE ENCASED IN 2 PL RUBBER HOSE ENCASED TREE SO THAT NO SECURELY CONTACT WITH THE TREE. ENGINEER SHALL SECURELY ATTACHED TO STAKES AND TWIST WIRE ENDS TO ELIMINATE EXPOSED CUTS. DO NOT PRUNE ROOT BALL WITH STAKES. FOR DECIDUOUS TREES, THE TREE SHOULD BE CUT AT FIRST MAIN BRANCH. FOR CONIFEROUS TREES, THE TREE SHOULD BE CUT AT HALF HEIGHT OF TREE. TREES PLANTED IN EXPOSED LOCATIONS OR ON SLOPES MAY REQUIRE THREE STAKES, 100MM LAYER.
- APPROVED MULCH SUCH AS SHREDED LEAF LITTER OR SCREENED COMPOSTED MANURE OR DARK COLOURED SHREDED WOOD.
- BURLAP WRAPPING SHALL BE REMOVED FOR INSPECTION OF TRUNK AND REPLACED. INSTALL FOR LENGTH OF TRUNK TO FIRST MAIN BRANCH. IN ADDITION FOR TREES NOT PLANTED IN BEDS, PROVIDE AN APPROVED PLASTIC MOVING CLAMP, SUCH AS A 200MM LENGTH HO TO BOOT. FOR TREES WHICH MAY BE SUSCEPTIBLE TO ROCKET DAMAGE, AN APPROVED PLASTIC GUARD SHALL BE REQUIRED INSTEAD. REFER TO PLANT LIST. CREATE SAUCER AT BASE OF TREE WITH 100MM EDGE. PERIMETER OF SAUCER NEATLY TOOK EDGE OF MULCHED SAUCER TO CREATE AN UNDISTURBED CRACK AT BASE OF TREE. TRIM ONLY REQUIRED PLANT PARTS, RETAINING NATURE. SHAPE ENSURE BINDING IN BRANCHES IS REMOVED.
- DAMAGED OR POORLY STRUCTURED PLANTS ARE UNACCEPTABLE. MARK DAMAGE INCLUDING LOOSE BARK, UNHEALED WOUNDS AND SPLITS IN TRUNK BARK AS CAUSE FOR REJECTION OF TREE.

SODDING AND SEEDING

- AFTER ROUGH GRADING IS APPROVED AND TOPSOIL HAS BEEN SPREAD AND FINISHED, GRADING TO DEPTH SPECIFIED IN CONTRACT OR A MINIMUM 100MM COMPACTED DEPTH WHICH EVER IS MORE, INSPECT SITE READINESS FOR SODDING.
- DAMPEN SOIL SURFACE TO MINIMIZE DUST. RESPECT GOVERNING REGULATIONS WITH RESPECT TO POLLUTION CONTROL. APPLY ANY REQUIRED FERTILIZER AS IS DETERMINED BY CONTRACT DOCUMENTS AND RANGE INTO TOP 100MM TOPSOIL. SOIL TO CONSOLIDATE TOPSOIL. LEAVING SMOOTH AND FIRM AGAINST DEEP FOOTPRINTS. JUST PRIOR TO SODDING OR SEEDING, MACHINE RAKE SOIL TO SCARIFY SURFACE AND ELIMINATE MINOR IRREGULARITIES.
- SOD SHALL BE 1# NURSERY SOD FOR LAWNS, UNIFORMLY THICK AND FREELY CUT.
- CULTIVAR BLEND CONSISTENT THROUGHOUT. DO NOT USE HEAT BASED SOD SLIPPER WITH PLASTIC MESH. LAY SOD WITHIN 36 HOURS OF CUTTING. STONE IN SHADE AND KEEP COOL UNTIL INSTALLED.
- SOD MUST BE SET WITH TIGHT JOINTS WHICH ARE NOT VISIBLE. SOIL AND TOP 10MM OF SOIL AFT WATER BY SPRINKLER METHOD OR SIMILAR TEMPORARY PRECIPITATION METHOD WHICH APPLIES WATER IN A MANNER WHICH DOES NOT SURFACE SOIL OR SOIL. AFTER SOD HAS BEEN LAYED, SOIL SHOULD BE AREA TO ENSURE A GOOD BOND BETWEEN SOD AND SOIL AND TO REMOVE MINOR IRREGULARITIES IN THE LAWN SURFACE. NO LAWN PICES ON SLOPES WHERE NECESSARY. DO NOT USE METAL PICES.
- ALL SODDED AND SEEDING AREAS ARE SUBJECT TO A ONE YEAR WARRANTY FROM DATE OF ACCEPTANCE.
- UNLESS NOTED OTHERWISE, AREAS ARE TO BE SODDED.
- SEED AS SPECIFIED ON DRAWINGS.

KEY PLAN

LEGEND



SHRUB & GROUND COVER PLANTING

- SHRUBS AND GROUND COVERS TO BE CONTAINED IN CONTINUOUS BED. PLANTING BEDS TO BE NEATLY SET OUT AND TOOK EDGED TO CREATE A BROOK LINE WITH AN UNIFORM GENERALITY. SHRUBS TO BE SET OUT FOR APPROVAL PRIOR TO PLANTING AND SHOULD SET IN A ONE HOSE RATION TO BE SET EVENLY SPACED FROM EDGE OF PLANTING BED OR BURLAP OR CURB. MINIMUM 100MM SOIL AMOUNT FOR PLANTING BEDS AND TREE PITS TO BE PORTULCULAR QUALITY TOPSOIL. FREE OF WEEDS AND ORGANIC SOIL. MAY BE AVAILABLE FROM STOCKPILE. TOPSOIL TO BE BLENDED WITH ADEQUATE SCREENED SOIL AMENDMENT SUCH AS COMPOSTED MANURE OR DARK COLOURED SHREDED WOOD. INSTALL APPROVED DARK COLOURED MULCH TO A DEPTH OF 100MM IN BEDS. PROVIDE MULCH SAMPLE FOR APPROVAL. SEE MULCH NOTES ON PLANTING DETAILS.
- WATER EACH PLANT THOROUGHLY PRIOR TO PLACEMENT OF MULCH. INSTALL APPROVED DARK COLOURED MULCH TO A DEPTH OF 100MM IN BEDS. PROVIDE MULCH SAMPLE FOR APPROVAL. SEE MULCH NOTES ON PLANTING DETAILS.

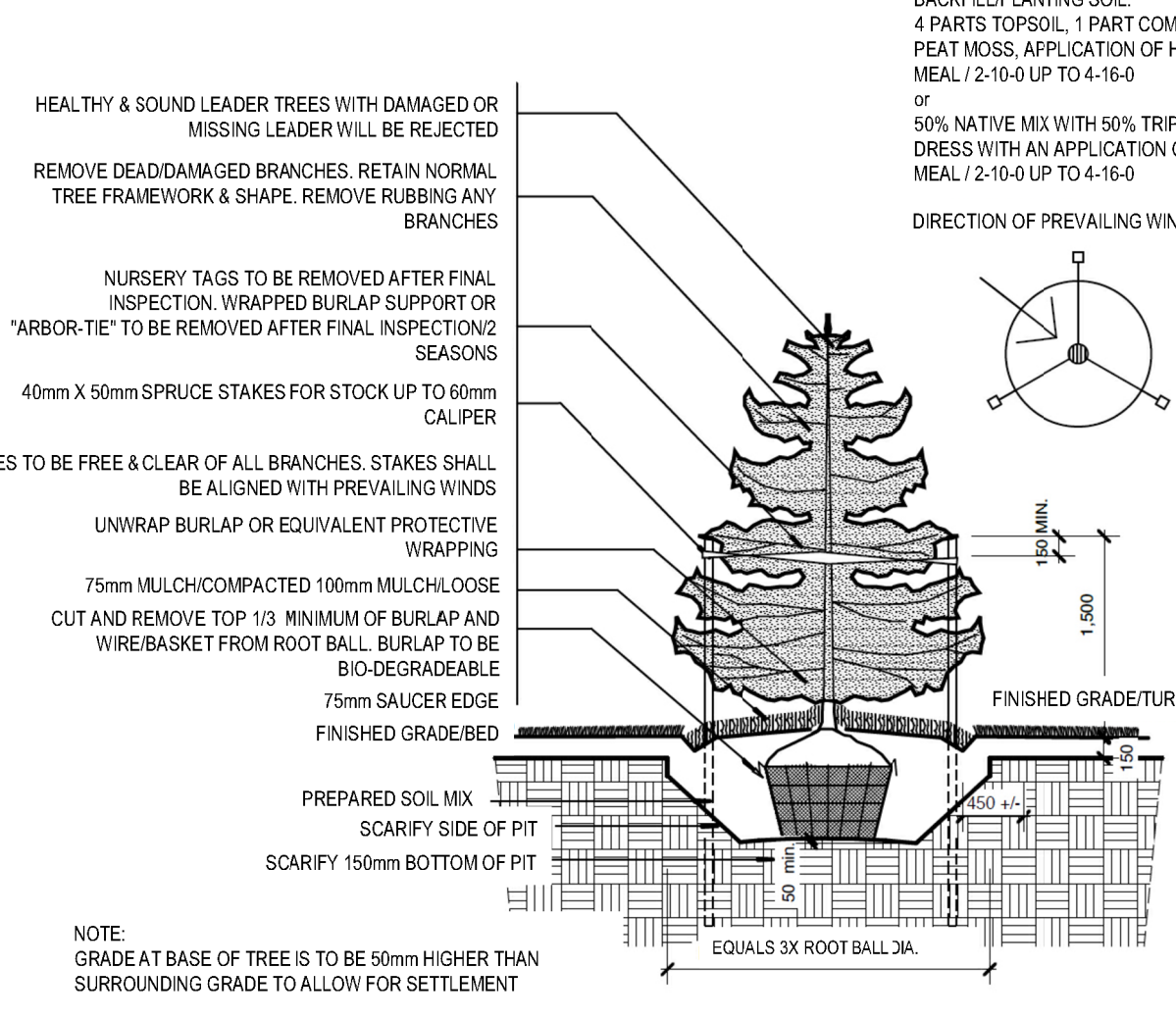
PLANTING SCHEDULE

SYM	QTY	BOTANICAL NAME	COMMON NAME	SIZE	SPACING	NOTES
DECIDUOUS TREES						
BK	13	Acer palmatum "Beni Kasa"	Beni Kasa Japanese Maple	70 mm		Specimen
AM	7	Acer sibiricum "Autumn Moon"	Autumn Moon Japanese Maple	70 mm		Specimen
GVZ	3	Zelkova serrata "Green Vase"	Green Vase Zelkova	60 mm		Specimen
CONIFEROUS TREES						
WF	8	Abies Concolor	White Fir	200 cm		Single leader, specimen
CONIFEROUS SHRUBS						
SKJ	16	Juniperus sibirica "Skandis"	Skandia Juniper	60 cm	1200 mm o.c.	Container
SMM	5	Pinus mugo "Stomound"	Stomound Mugo Pine	30 cm	900 mm o.c.	Container
PERENNIALS						
SDS	32	Hemerocallis "Stella D'Or"	Stella D'Or Daylily	1 gal.	300 mm o.c.	Container
GRASSES AND SEDGES						
FRG	23	Calamagrostis acutiflora "Karl Foerster"	Karl Foerster Feather Reed Grass	1 gal.	600 mm o.c.	Container
PTG	51	Miscanthus sinensis var. "Supergrass"	Supergrass Fountain Grass	1 gal.	900 mm o.c.	Container
LBF	70	Pennisetum alpestricum "Little Bunny"	Little Bunny Dwarf Fountain Grass	1 gal.	600 mm o.c.	Container

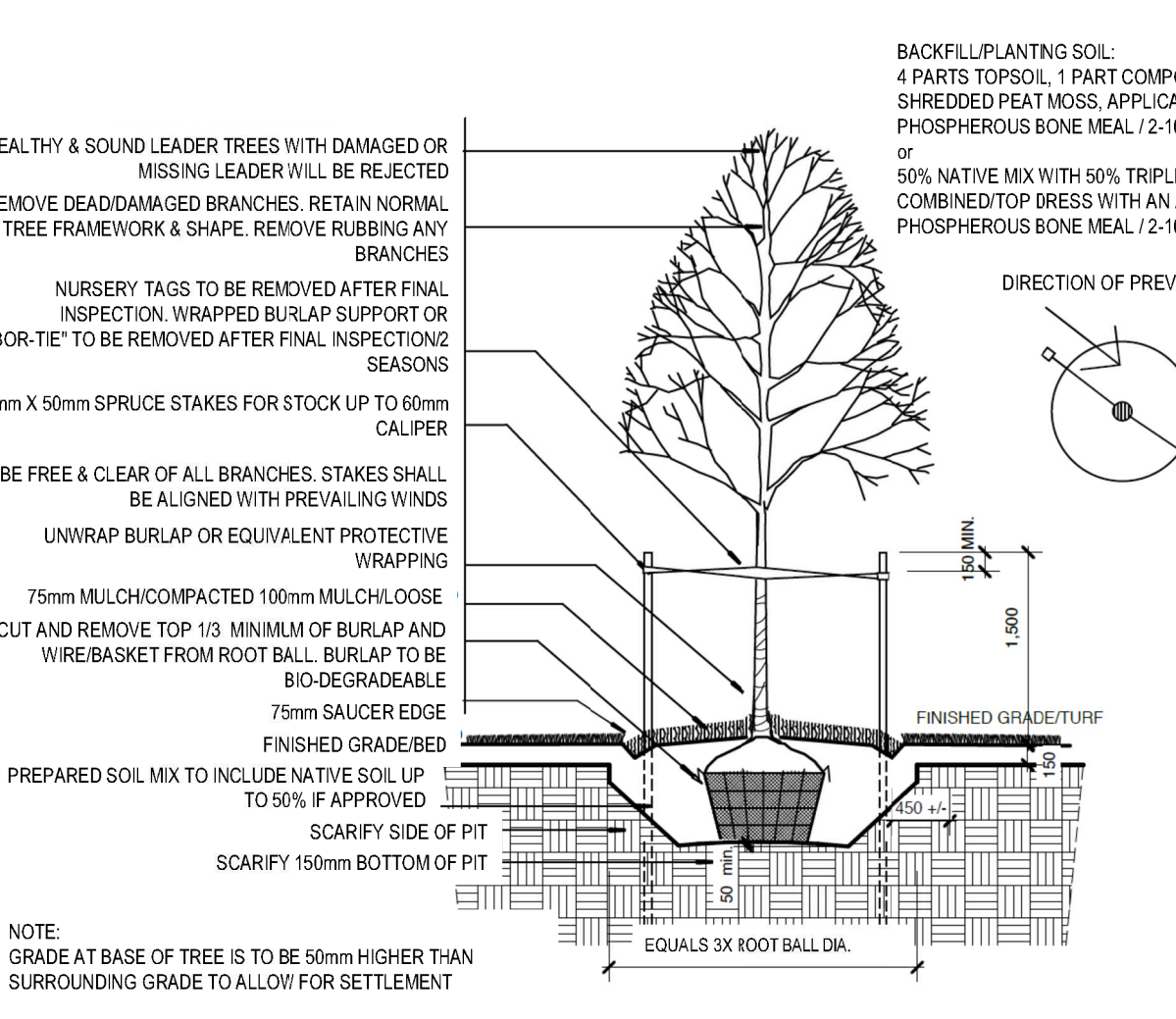
1 LANDSCAPE PLAN
L100 NTS



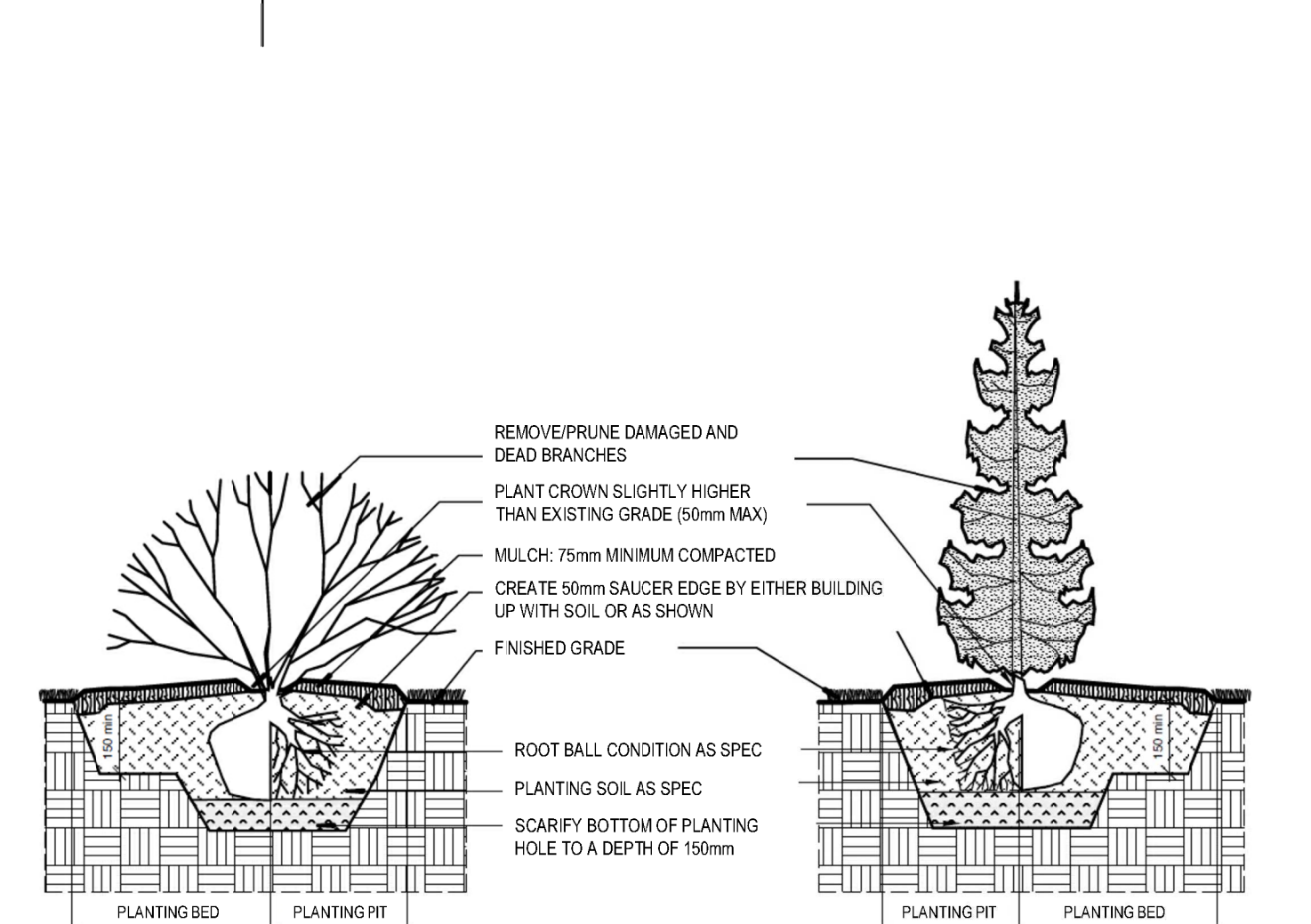
7 BIKE RACK
L100 NTS



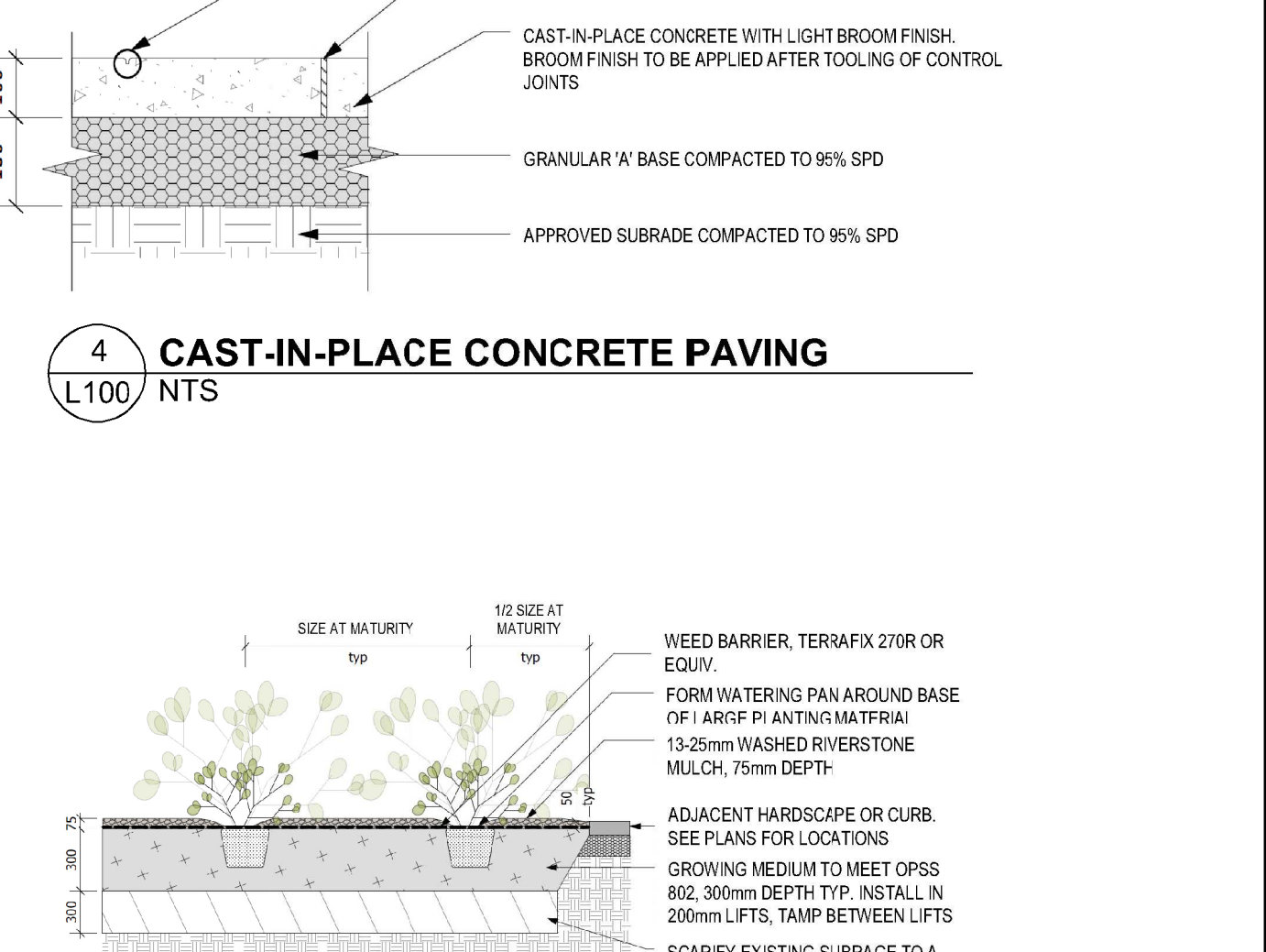
6 CONIFEROUS TREE PLANTING DETAIL
L100 NTS



5 DECIDUOUS TREE PLANTING DETAIL
L100 NTS



2 SHRUB PLANTING DETAIL
L100 NTS



4 CAST-IN-PLACE CONCRETE PAVING
L100 NTS

All plans, sketches, drawings, graphic representations and specifications prepared by ANDREW SMITH BUILDING DESIGN INC are instruments of service for carrying out a project. ANDREW SMITH BUILDING DESIGN INC retains copyright in these plans, sketches, drawings, graphic representations and specifications, which may not be used for any other project without the written consent of ANDREW SMITH BUILDING DESIGN INC and its Owners.

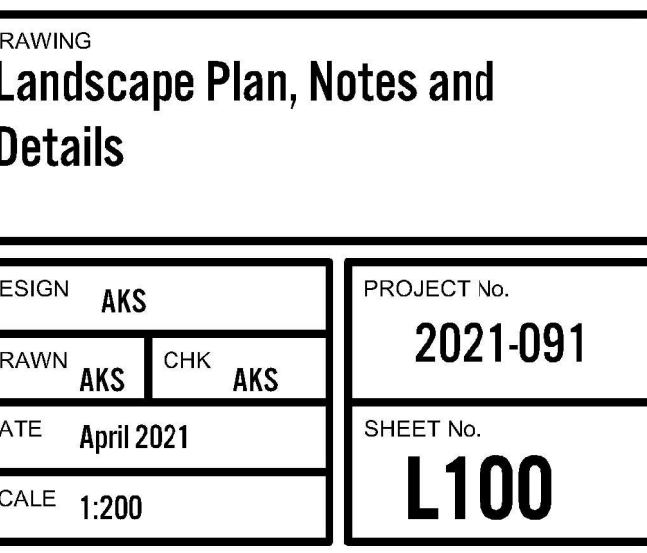
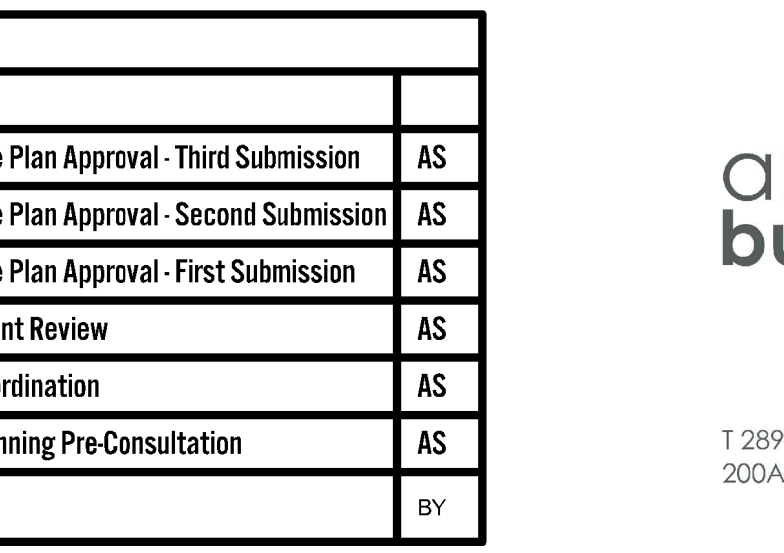
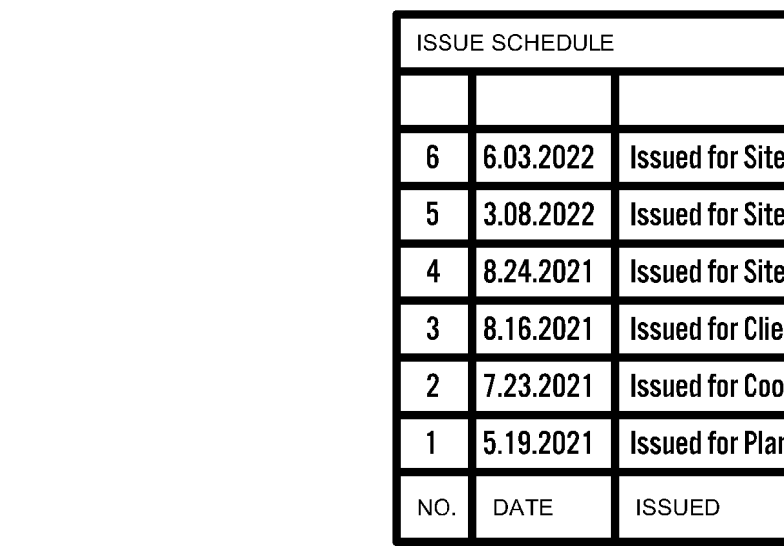
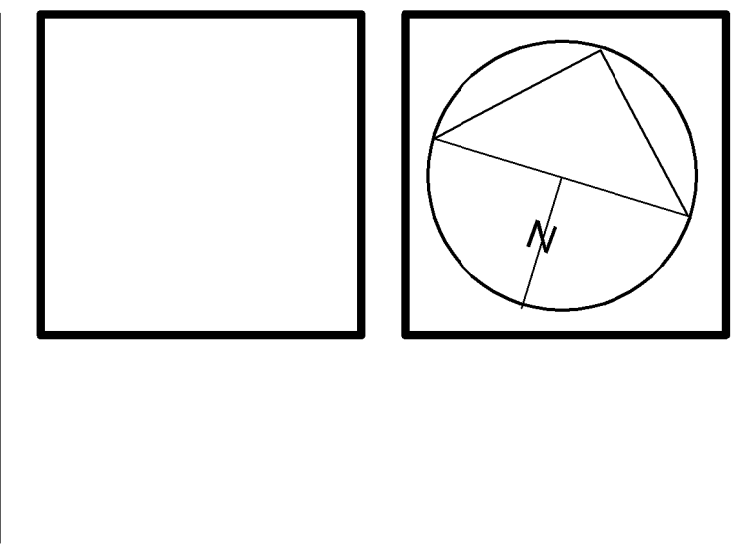
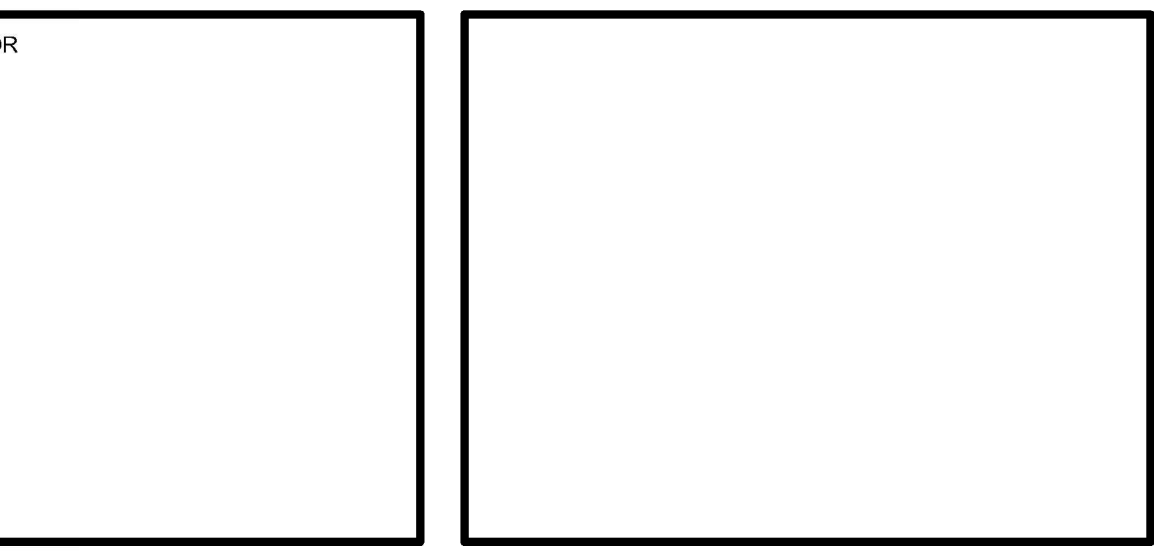
Do not scale drawings.

Examine the drawings carefully before commencing the Work. Report discrepancies, if any, to the Designer and obtain a definition of additional instructions before proceeding with the work of the Work.

Do not commence the Work unless the drawings are issued to Contract in full.

NOTE: These drawings are not to be used for building permit application or construction unless countersigned by the Designer with BCGN numbers where applicable.

GENERAL CONTRACTOR



ISSUE SCHEDULE

NO.	DATE	ISSUED	BY
1	5.19.2021	Issued for Planning Pre-Consultation	AS
2	7.23.2021	Issued for Coordination	AS
3	8.16.2021	Issued for Client Review	AS
4	8.24.2021	Issued for Site Plan Approval - First Submission	AS
5	3.08.2022	Issued for Site Plan Approval - Second Submission	AS
6	8.03.2022	Issued for Site Plan Approval - Third Submission	AS

andrewsmith
buildingdesign
INC

289 252 2332 www.asdmtdesign.com
20A division street, cobourg, on k7a 3p7

PROJECT
Brock St
Bottling/Distribution Facility
156 Wilmett Street, Cobourg, ON

DRAWING
Landscape Plan, Notes and Details

DESIGN: AKS
DRAWN: AKS
DATE: April 2021
SCALE: 1:200

PROJECT NO.: 2021-091
SHEET NO.: L100