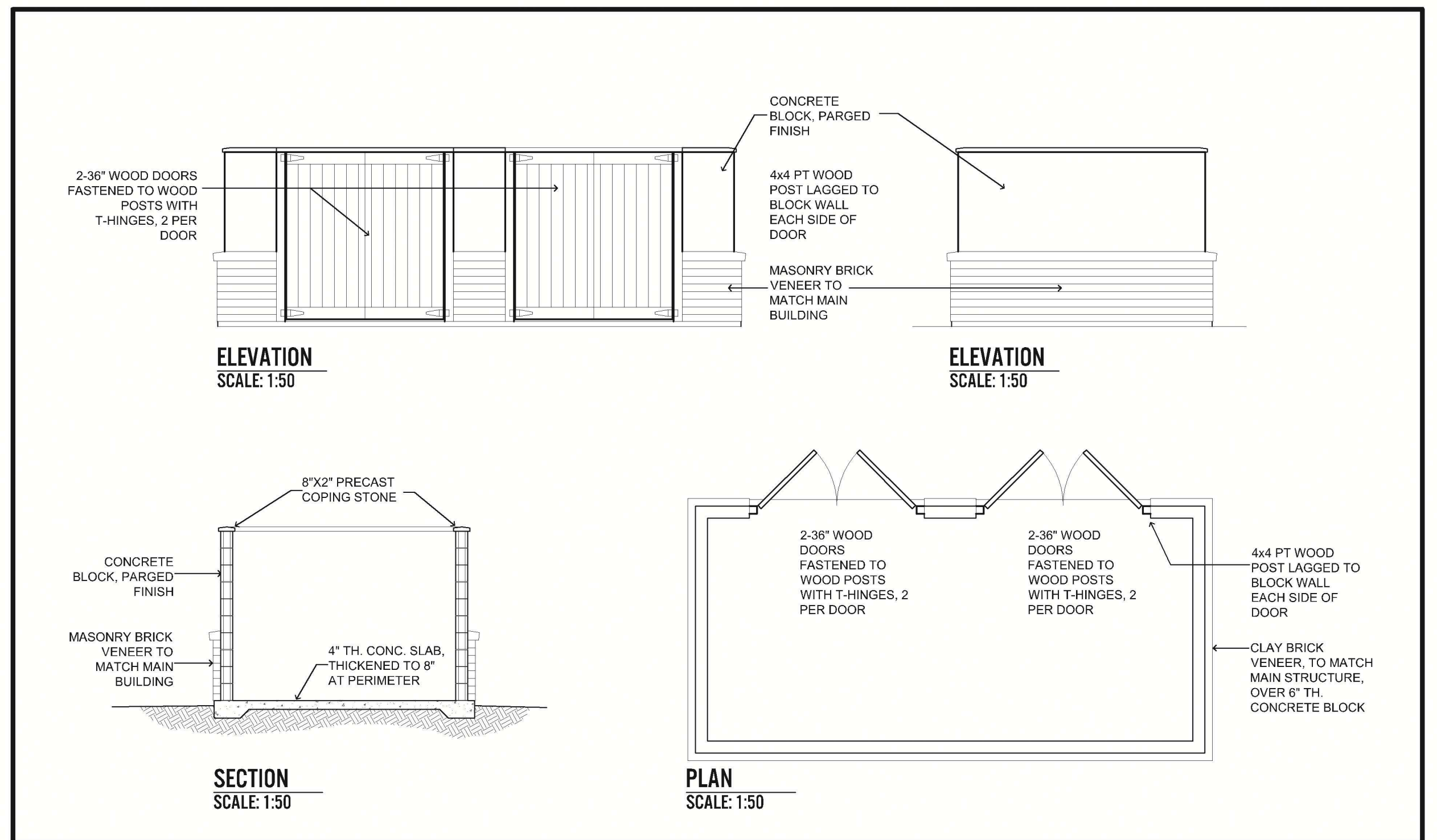
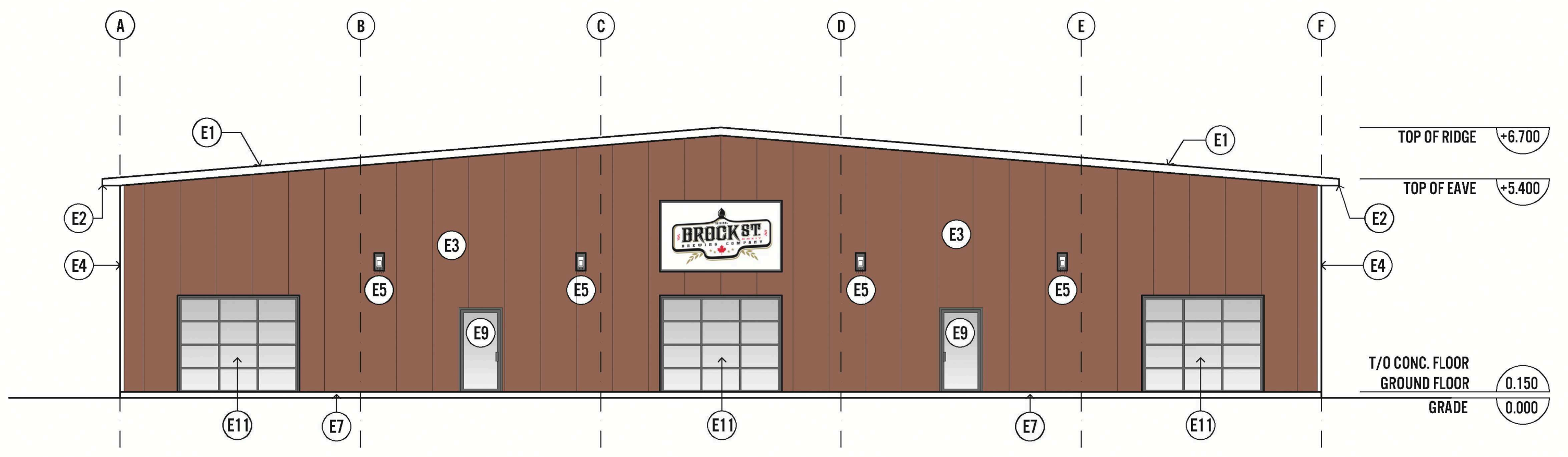


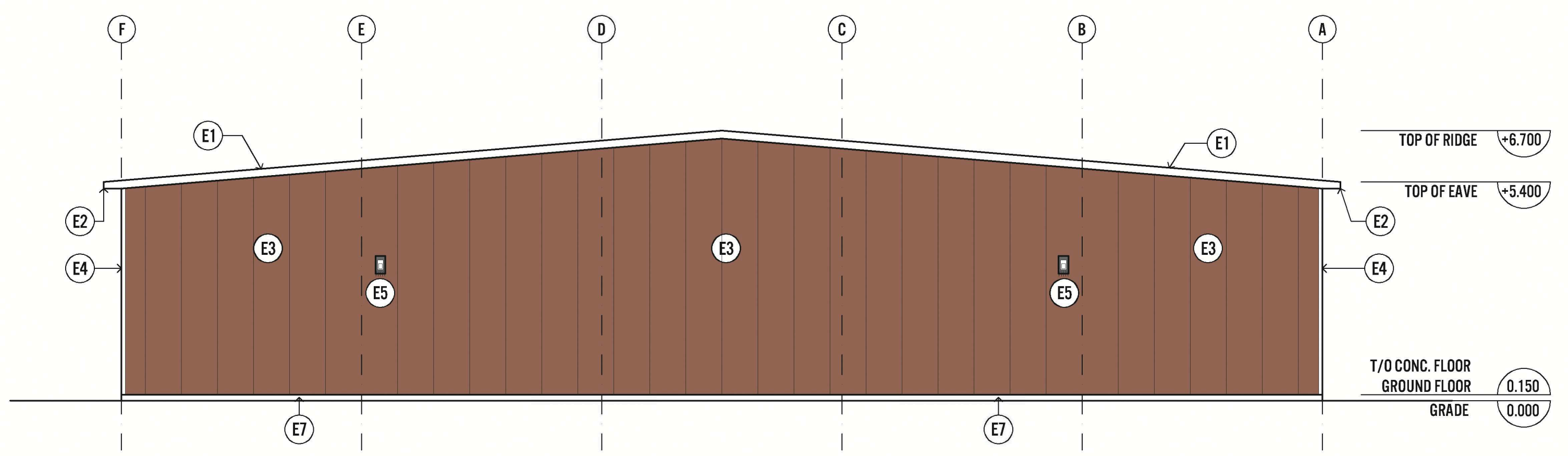
ELEVATION FINISH SCHEDULE	
E1	STANDING SEAM PREFINISHED METAL ROOF "SOLARLINE"
E2	ALUMINUM EAVESTROUGH
E3	PREFINISHED METAL-CLAD INSULATED PANEL, NDRSTEEL, "BRICK RED"
E4	PREFINISHED METAL CORNER TRIM, NDRSTEEL, "POLAR WHITE"
E5	WALL-MOUNTED LED LIGHT PACK
E6	FOUNDATION BEYOND
E7	6" MINIMUM CONCRETE CLEAR DOOR
E8	INSULATED METAL & GLASS DOOR
E9	DOUBLE-GLAZED GLASS COMMERCIAL ENTRY DOOR
E10	INSULATED OH DOOR
E11	GLAZED COMMERCIAL OH DOOR



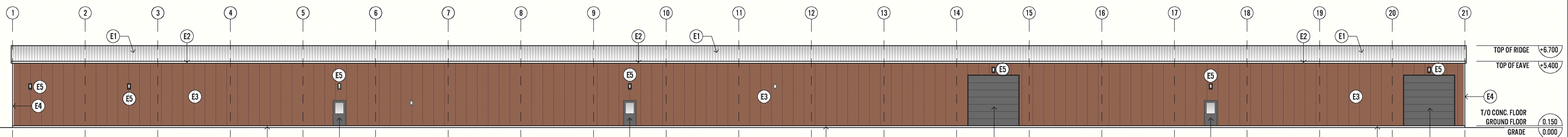
5 REFUSE ENCLOSURE DETAILS
SCALE: 1:50



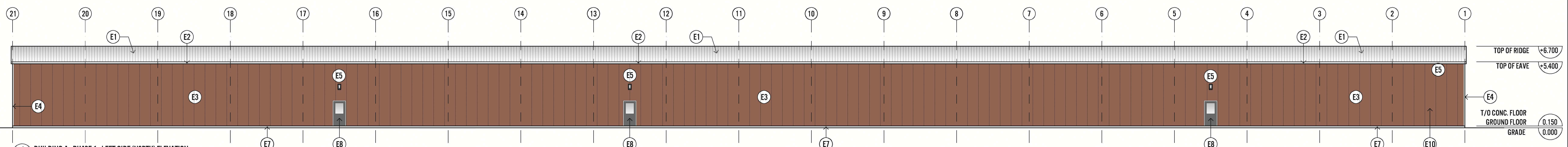
1 BUILDING A - PHASE 1 - PRINCIPAL (WEST) ELEVATION
SCALE: 1:100



2 BUILDING A - PHASE 1 - REAR (EAST) ELEVATION
SCALE: 1:100



3 BUILDING A - PHASE 1 - RIGHT SIDE (SOUTH) ELEVATION
SCALE: 1:150



4 BUILDING A - PHASE 1 - LEFT SIDE (NORTH) ELEVATION
SCALE: 1:150

All plans, sketches, drawings, graphic representations and specifications prepared by ANDREW SMITH BUILDING DESIGN INC are instruments of service for carrying out a project. ANDREW SMITH BUILDING DESIGN INC retains copyright in these plans, sketches, drawings, graphic representations and specifications, which may not be used for any other project without the written consent of ANDREW SMITH BUILDING DESIGN INC and the Owners.

Do not scale drawings.

Examine the drawings carefully before commencing the Work. Report discrepancies, if any, to the Designer and obtain clarification of essential instructions before proceeding with part of the Work.

Do not commence the Work unless the drawing is issued for Construction.

NOTE: These drawings are not to be used for building permit application or construction unless countersigned by the Designer with BCIN numbers affixed.

GENERAL CONTRACTOR

NO.	DATE	ISSUED	BY
6	6.03.2022	Issued for Site Plan Approval - Third Submission	AS
5	3.08.2022	Issued for Site Plan Approval - Second Submission	AS
4	8.24.2021	Issued for Site Plan Approval - First Submission	AS
3	8.16.2021	Issued for Client Review	AS
2	7.23.2021	Issued for Coordination	AS
1	5.19.2021	Issued for Planning Pre-Consultation	AS

andrewsmith
buildingdesign inc

T.289.252.2332 www.aksimhdesign.com
200A division street, cobourg, on k9a 3p7

PROJECT

Bottling/Distribution Facility
156 Wilmott Street, Cobourg, ON

DRAWING
Building A
Phase 1 - Exterior Elevations

DESIGN	AS	PROJECT No.	2021-091
DRAWN	AS	CHK	AS
DATE	April 2021	SHEET No.	A200
SCALE	AS SHOWN		