

SCHEDULE "A"

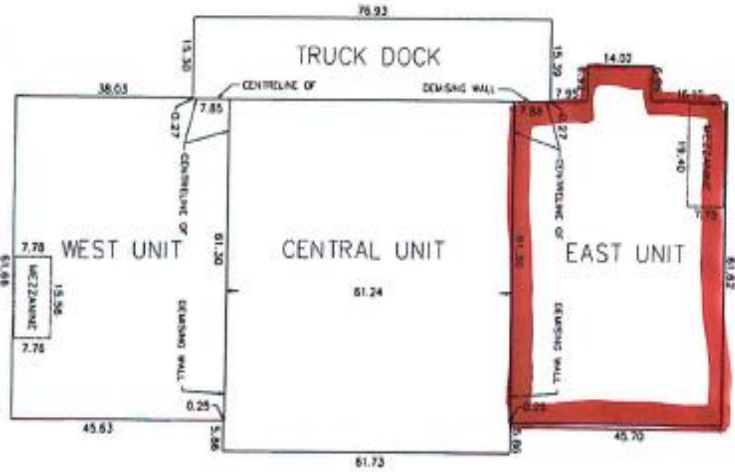
AREA SKETCH
BUILDING 6
NORTHAM INDUSTRIAL PARK
COBOURG, ONTARIO
COUNTY OF NORTHUMBERLAND

SCALE 1 : 750



J.D. BARNES LIMITED
 © COPYRIGHT 2016

METRIC DISTANCES AND/OR COORDINATES SHOWN ON THIS PLAN ARE IN METERS AND CAN BE CONVERTED TO FEET BY DIVIDING BY 0.3048



TOTAL FLOOR AREA = 11068.8 sq.m. (119143 sq.ft.)

EAST UNIT
 FLOOR AREA = 2927.4 sq.m. (31510 sq.ft.)
 MEZZANINE AREA = 150.4 sq.m. (1618 sq.ft.)

CENTRAL UNIT
 FLOOR AREA = 4115.8 sq.m. (44302 sq.ft.)

WEST UNIT
 FLOOR AREA = 2824.4 sq.m. (30402 sq.ft.)
 MEZZANINE AREA = 120.9 sq.m. (1301 sq.ft.)

TRUCK DOCK
 FLOOR AREA = 1201.2 sq.m. (12929 sq.ft.)

SURVEYOR'S CERTIFICATE

- I CERTIFY THAT:
1. THE AREAS SHOWN ARE CORRECT
 2. THE SURVEY WAS COMPLETED ON OCTOBER 13, 2016

OCTOBER 28, 2016
 DATE

[Signature]
 B. MORSE
 ONTARIO LAND SURVEYOR

<p>J.D. BARNES LAND INFORMATION SPECIALISTS 15000 MIDLAND AVE. SUITE 101 MISSISSAUGA, ONTARIO L4W 4Y6</p>	MAN: [] DRAWN: [] CHECKED: [] DATE: 10/26/2016 REV: []
	PREPARED FOR: DELCOM MANAGEMENT SERVICES INC
	18-25-208-00-A
	[]