



Figure 1: 212 King St. W (Dressler House) as seen from King St. W – file photo (2012)



Figure 2: 212 King St. W (Dressler House) looking north-west from King St. W

polymer shake product (or equivalent) be implemented in the colour “Chesapeake” as this appears to be the closest matching design and colour to the existing composite roofing material (see Figures 17-18). Additionally, the roofing contractor has indicated that traditional cedar shake roofing has lost its longevity with the loss of quality old growth forests and the use of wood is not recommended for modern applications.

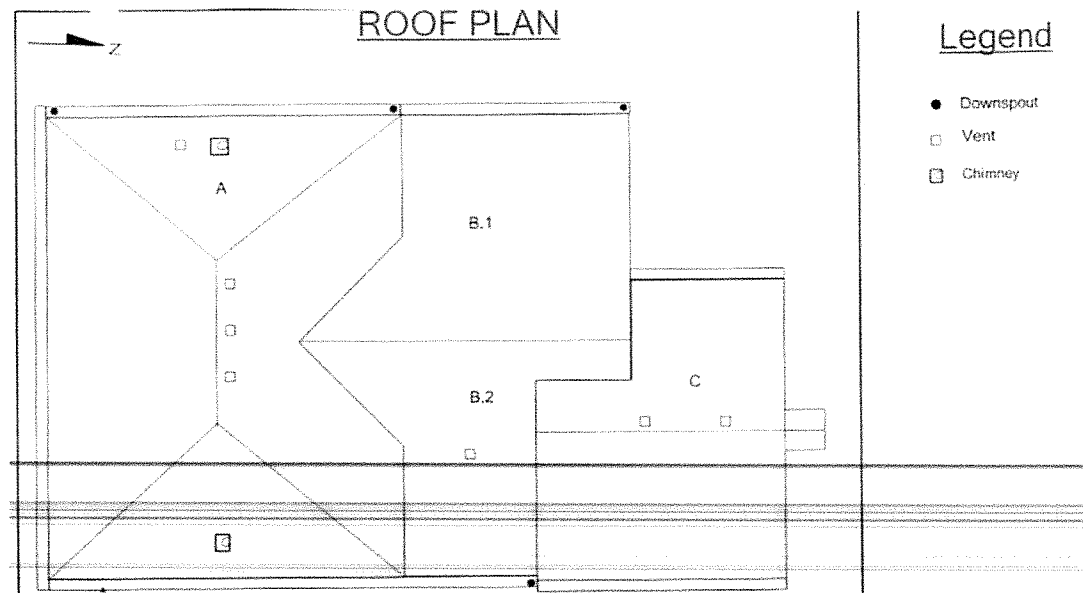


Figure 12: 212 King St. W (Dressler House) roof plan – only highlighted areas are to be replaced. Areas B.1 and B.2 have already been replaced with a composite polymer shake style material (see Figure 17).

